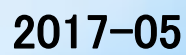


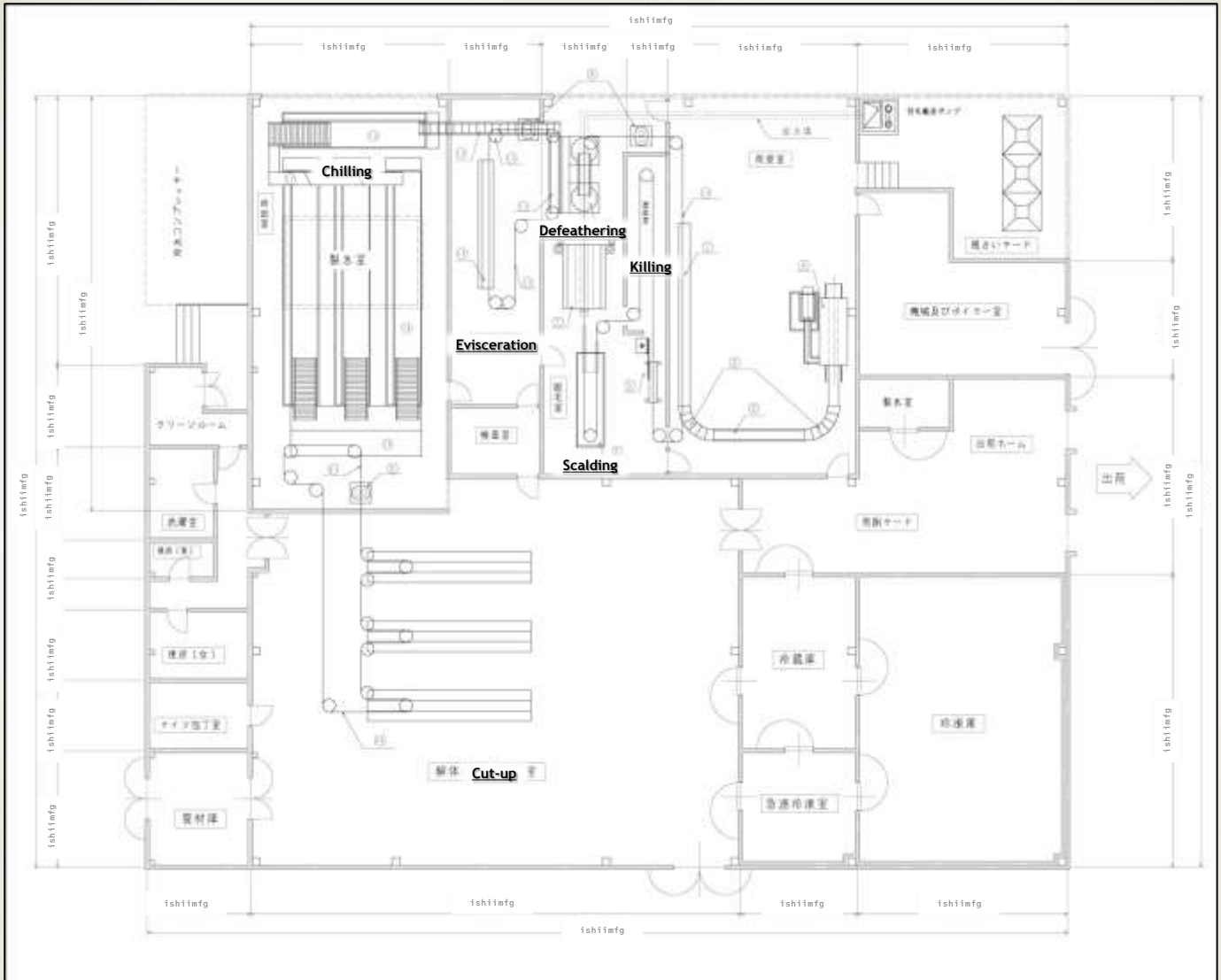


# 2017



# Total solution, from plant design to development and manufacturing

【General view of poultry processing plant】



Ishii Manufacturing was established in the year 1961. We specialize in designing, development and manufacturing of poultry processing equipment and machines. With a history & experience of over 56 years, we are an industry leader and have been providing solutions to major broiler companies in Japan.

Ishii Manufacturing has also been servicing customers in other food-processing industries, Japan agriculture and several government institutions. We have been active not only Japan, but have exported products to several customers across Asia.

We offer a wide range of standardized stand-alone units to integrated plants and system, designed to meet our customer's needs.

Our strength lies in understanding the customer's unique needs, customized designing, providing quality products and reliable services. Our Mission is service and satisfaction.

If you do not happen to find a suitable solution among our standard products, please do not hesitate to communicate with us.

# Poultry Processing Flowchart

broiler / free range  
(spring chicken)

culled chicken  
(adult chicken)

Killing

- Tranquillizing Machine
- Automatic killing machine
- Kill cone

Killing

- Tranquillizing Machine
- Automatic killing machine
- Kill cone

Scalding

- Scalders
- Mini Scalders

Scalding

- Scalders
- Mini Scalders

Defeathering

- Primary Picker
- Torque Picker
- Drum Picker
- Twin Drum Picker

Defeathering

- Primary Picker
- Torque Picker
- Drum Picker
- Twin Drum Picker

Chilling

- Chiller

Singeing  
feather

- De-feather Clean Burner
- Finish Use Picker

Evisceration  
Cut-up

- All stainless Conveyor (For cut-up)
- Foot Skin Remover
- Automatic Gizzard Opener
- Rotary cutter (For cut-up)
- Head Cutter
- Air Shooter (vacuum transport system)

Chilling

- Chiller

Evisceration  
Cut-up

- All stainless Conveyor (For cut-up)
- Foot Skin Remover
- Automatic Gizzard Opener
- Rotary cutter (For cut-up)
- Head Cutter
- Air Shooter (vacuum transport system)

# I N D E X

	Automatic killing machine	AK-5900	P.1
	Tranquillizing Machine	AN-5900	P.2
	Kill cone	HO-2400	P.3
	Scalder	WES-2500	P.4
	Mini Scalder	SCMI-4	P.5
	Torque Picker	TP-D821 TP-D831 TP-D1021 TP-D1031	P.6
	Primary Picker	MI-K-1	P.7
	Finish Use Picker	MI-K-2	P.8
	Drum Picker E	EMI-100 EMI-200	P.9
	Drum Picker	MI-1 MI-3 MI-5	P.10
	Twin Drum Picker	TMI-5	P.11
	De-feather Clean Burner	KB-2400	P.12
	Chiller	CH-2400	P.13
	Overhead Conveyor (For live bird handling area)	OH-2400	P.14
	Overhead Conveyor (For cut-up area)	OH-2401	P.15
	Shackle	HU-2401 HU-2402 HU-2403	P.16
	Conveyor Trolley	TR-2401 TR-2402	P.17
	Shackle Washer	HS-2400	P.18
	Head Cutter	HC-2400	P.19

	<b>Automatic container washing machine</b>	<b>SE-2400</b>	<b>P.20</b>
	<b>Automatic Container Washer ( small )</b>	<b>ACW-3000</b>	<b>P.21</b>
	<b>Rotary filter (foreign substance separating machine)</b>	<b>LS-2401 LS-2402</b>	<b>P.22</b>
	<b>Foot Skin Remover</b>	<b>MK-2400</b>	<b>P.23</b>
	<b>Automatic Gizzard Opener</b>	<b>SG-2400</b>	<b>P.24</b>
	<b>Air Shooter (vacuum transport system)</b>	<b>SH-2400</b>	<b>P.25</b>
	<b>Rotary cutter (For cut-up)</b>	<b>BC-2400</b>	<b>P.26</b>
	<b>Conveyor</b>	<b>CV-2400</b>	<b>P.27</b>
	<b>All stainless Conveyor (For cut-up)</b>	<b>CV-2401</b>	<b>P.28</b>
	<b>Sorting All stainless steel conveyor</b>	<b>CV-2402</b>	<b>P.29</b>
	<b>All stainless steel Balance weave belt conveyor</b>	<b>CV-2403</b>	<b>P.30</b>
	<b>Stainless steel modular belt Inclined conveyor</b>	<b>CV-2404</b>	<b>P.31</b>
	<b>Spin-drier for food</b>	<b>FD-2400</b>	<b>P.32</b>
	<b>Other products</b> Stainless steel pot ,stand, dolly		<b>P.33</b>
	<b>Other products</b> Stainless steel stand, lamp , pot		<b>P.34</b>
	<b>De-feather rubber</b>	Suzume Maru(S) No,1(with metal)NBR No,3(40°) No,3(55°) No,4(35°)	<b>P.35</b>
	<b>De-feather rubber</b>	No,5(35°) No,8(with cloth) No,9(60°) NO,9(45°) NO,10(50°) NO,11(round)	<b>P.36</b>
	<b>Other Item and Accessory that we handle</b>		<b>P.37</b>





Rotary blade



Height adjustment

- Easy to use and adjust. Height adjustment of the screw allows registration of highest & lowest position in advance.
- Function of adjustment of specific cutting position around birds head is available.
- Function of height adjustment of rotary blade is available.
- It reduces the damage to chicken’s windpipe and nerve as the chicken head is pushed gently by the screw.
- For smoother processing ,this machine can be used with the “Tranquillizing Machine – AN5900”
- For durability and high corrosion resistance, all the major parts of this machine are made from stainless steel 304.
- The above picture shows the machine for the line from right to left side. Machine for opposite line is also available.

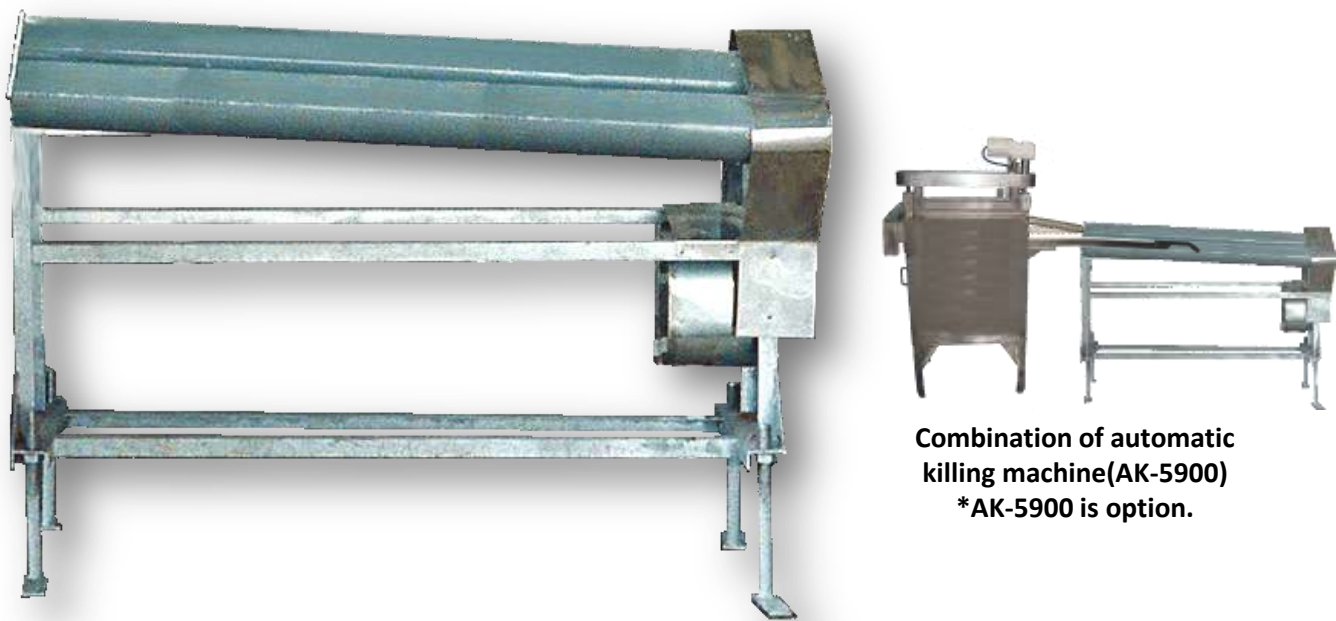
Option

- Spare rotary blade
- \* We have three kinds of materials; 304 stainless steel, alloy tool steel and high-speed tool steel.

Technical Specification

Model No.	AK-5900
Power output	0.4kw × 3
V o l t a g e	200V
H e i g h t	1,300mm
L e n g t h	2,500mm
W i d t h	1,200mm
E n c l o s u r e	Stainless steel 304
Rotary blade	Stainless steel 304, Alloy tool steel and high-speed tool steel.
C a p a c i t y	3,000 ~ 3,800BPH

\* The specialty and technical specification are subject to change, depending on change in scale of the plant corresponding to customer needs and installation without notice. Please inquire with us for further details.



Combination of automatic killing machine(AK-5900)  
\*AK-5900 is option.

- This machine can get bird tranquilized which is in restless condition after being shackled and send to automatic killing machine smoothly.
- The above picture shows the machine for the line from right to left side. Machine for opposite line is also available as AK-5900.

■ Technical Specification

Model No.	AN-5900
Power output	0.4kw × 1
V o l t a g e	200V
H e i g h t	1,060mm
L e n g t h	1,620mm
W i d t h	600mm
Enclosure	Stainless steel 304
F r a m e	Stainless steel 304
Capacity	3,000~3,800 BPH

\* The specialty and technical specification are subject to change, depending on change in scale of the plant corresponding to customer needs and installation without notice. Please inquire with us for further details.



- The simple structure of this machine leaves no scope for faults and is highly durable.
- It is highly hygienic as it is easy to wash.
- For durability and high corrosion resistance, all the major parts of this machine are made from stainless steel 304.

Technical Specification

Model No.	HO-2400
Height	930mm
Length	1,112mm
Width	450mm
Enclosure	Stainless steel 304
Frame	Stainless steel 304
Capacity	10 birds per once

\* The specialty and technical specification are subject to change, depending on change in scale of the plant corresponding to customer needs and installation without notice. Please inquire with us for further details.





- This machine can scald evenly on either side.
- This machine is designed and structured to untie bird feather with hot water by soaking bird feather efficiently.
- This machine helps to control the energy requirements pertaining to its compact design, efficient use of water and less heat radiation area.
- This machine is equipped with a thermostat to maintain a uniform temperature inside the water tank.

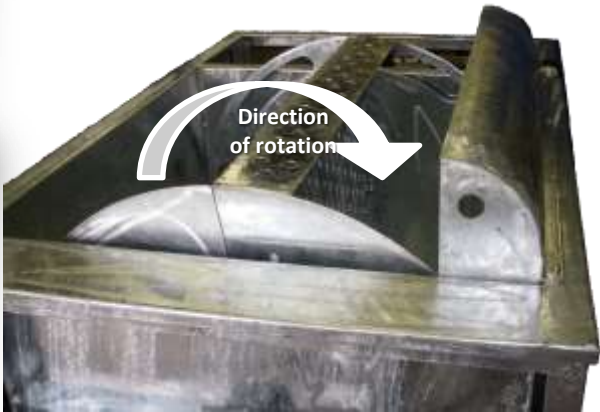
■Option

- Boiler （350kg/h～500kg/h 200V）

■ Technical Specification

Model No.	WUS-2500
Power output	1.5kw × 4
V o l t a g e	200V
H e i g h t	1,300mm
L e n g t h	3,400mm
W i d t h	1,112mm
Capacity of water tank	3.3t
Enclosure	Stainless steel 304
F r a m e	Stainless steel 304
Cap a c i t y	2,000～3,500BPH

\* The specialty and technical specification are subject to change, depending on change in scale of the plant corresponding to customer needs and installation without notice. Please inquire with us for further details.



Inside the main body

The displayed model is SCMI-4.

- This machine is designed and structured to untie bird feather with hot water by soaking bird feather efficiently.
- This machine helps to control the energy requirements pertaining to its compact design, efficient use of water and less heat radiation area.
- This machine is equipped with a thermostat to maintain a uniform temperature inside the water tank.

Technical Specification

Model No.	SCMI-4
Power output	0.4kw × 1
V o l t a g e	200V
H e i g h t	1,400mm
L e n g t h	1,430mm
W i d t h	900mm
Capacity of water tank	120ℓ
Enclosure	Stainless steel 304
F r a m e	Stainless steel 304
C a p a c i t y	10 birds per once
Processing time	60 seconds

Option ● Boiler (100kg/h 100V)

\* The specialty and technical specification are subject to change, depending on change in scale of the plant corresponding to customer needs and installation without notice. Please inquire with us for further details.



The displayed model shows only one single unit of TP-D821



- This machine makes it possible to get uniform de-feathering with a maximum of 72 disk plates moving on left, right and bottom.
- This machine is highly hygienic as it is easy to wash.
- Easy dismantling of disk plates allows easy replacement of de-feathering rubber.
- For durability and high corrosion resistance, all the major parts of this machine are made from stainless steel 304.

## Technical Specification

Model No.	TP-D821	TP-D831	TP-D1021	TP-D1031
L a t e r a l d i s k   p l a t e	8 × 2 rows × 2 set Subtotal 32	8 × 3 rows × 2 set Subtotal 48	10 × 2 rows × 2 set Subtotal 40	10 × 3 rows × 2 set Subtotal 60
L o w e r   p a r t d i s k   p l a t e	6 × 1 row Subtotal 6	—	6 × 1 row Subtotal 6	—
The number of the disk plate	Total 38	Total 48	Total 46	Total 60
P o w e r   o u t p u t	2.2kw × 5	2.2kw × 6	2.2kw × 5	2.2kw × 6
V o l t a g e	200V	200V	200V	200V
H e i g h t	2,020mm	2,020mm	2,020mm	2,020mm
L e n g t h	1,610mm	2,140mm	1,610mm	2,140mm
W i d t h	1,712mm	1,712mm	1,712mm	1,712mm
E n c l o s u r e	Stainless steel 304	Stainless steel 304	Stainless steel 304	Stainless steel 304
R o t a r y   b l a d e	Galvanized steel	Galvanized steel	Galvanized steel	Galvanized steel
r e c o m m e n d e d c o m b i n a t i o n	2 units	1 unit	2 units	1 unit
C a p a c i t y	2,500~3,000 BPH		3,000~3,500 BPH	

## Option

- De-feather rubber No.9(60°) for replacement

\* We recommend the use of this machine is the above specified combinations in order to achieve the highlighted processing capacity.

\* The specialty and technical specification are subject to change, depending on change in scale of the plant corresponding to customer needs and installation without notice. Please inquire with us for further details.



- Ideal for initial process of de-feathering.
- De-feathering is done in a way to leave the skin without dissolving the fat.
- The de-feathering system is designed not to damage the chicken frame.
- This machine is highly hygienic as it is easy to wash.
- For durability and high corrosion resistance, all the major parts of this enclosure are made from stainless steel 304.

Option

- De-feather rubber No,8(with cloth) for replacement

Technical Specification

Model No.	MI-K-1
Power output	2.2kw(6P) × 2
V o l t a g e	200V
H e i g h t	2,300mm
L e n g t h	2,400mm
W i d t h	2,500mm
Enclosure	Stainless steel 304
F r a m e	Stainless steel 304
Cap a c i t y	2,000~3,000 BPH

\* The specialty and technical specification are subject to change, depending on change in scale of the plant corresponding to customer needs and installation without notice. Please inquire with us for further details.



- Ideal for finishing position of singeing feather.
- Easy to remove the surface dirt of the chicken after the singeing process, effectively and finishing it neatly.
- This machine is highly hygienic as it is easy to wash.
- For durability and high corrosion resistance, all the major parts of this enclosure are made from stainless steel 304.
- Alternative option of brush is also available instead of de-feather rubber.

■ Option

- De-feather rubber No,8(with cloth) for replacement

■ Technical Specification

Model No.	MI-K-2
Power output	1.5kw(6P) × 2
V o l t a g e	200V
H e i g h t	1,900mm
L e n g t h	1,600mm
W i d t h	1,600mm
Enclosure	Stainless steel 304
F r a m e	Stainless steel 304
Capacity	2,000~3,000 BPH

\* The specialty and technical specification are subject to change, depending on change in scale of the plant corresponding to customer needs and installation without notice. Please inquire with us for further details.





- This drum picker is economy type ,comparing conventional product.
- The displayed mode is the smallest drum picker in our range, compact in design, however has the capacity to de-feather 3-4 birds in approximately 1minute.
- With de-feather discharging system in place ,this machine can be used consecutively.
- This machine is highly hygienic as it is easy to wash.
- For durability and high corrosion resistance, all the major parts of this machine are made from stainless steel 304.

■ Technical Specification

Model No.	EMI-100	EMI-200
Power output	0.75kw × 1	
V o l t a g e	Single phase 100V	Three phases 200V
H e i g h t	1,020mm	
L e n g t h	630mm	
W i d t h	630mm	
r u n n e r	Φ547	
W e i g h t	107kg	
E n c l o s u r e F r a m e	Stainless steel 304	
C a p a c i t y	3～4 birds	
P r o c e s s i n g T i m e	60秒	

■ Option

- De-feather rubber NO.9 (45° )
- \* The specialty and technical specification are subject to change, depending on change in scale of the plant corresponding to customer needs and installation without notice. Please inquire with us for further details.



The displayed model is MI-1

\* The water proof switch(left side) is option.



- The displayed mode MI-1 is the smallest drum picker in our range, compact in design, however has the capacity to de-feather 3-4 birds in approximately 1minute.
- With de-feather discharging system in place ,this machine can be used consecutively.
- This machine is highly hygienic as it is easy to wash.
- For durability and high corrosion resistance, all the major parts of this machine are made from stainless steel 304.
- Automatic switch gear for door is available as an option.

## Technical Specification

Model No.	MI-1	MI-3	MI-5
Power output	0.75kw(100v) × 1 0.40kw(200V) × 1	0.75kw(6p) × 1	2.2kw(8p) × 1
Voltage	100V/200V	200V	200V
Height	1,020mm	1,150mm	1,250mm
Length	630mm	900mm	1,150mm
Width	630mm	900mm	1,150mm
runner	φ550	φ760	φ1,060
Enclosure Frame	Stainless steel 304	Stainless steel 304	Stainless steel 304
Capacity	3~4 birds	8~10 birds	12~15 birds
Processing time	60 seconds	60 seconds	60 seconds

- ### Option
- De-feather rubber No,3(40° ) for replacement MI-3~MI-5 all except below
  - De-feather rubber No,5(35° ) for replacement All of MI-1
  - Waterproof switch

\* The specialty and technical specification are subject to change, depending on change in scale of the plant corresponding to customer needs and installation without notice. Please inquire with us for further details.



Inside view of drum picker

- A labor is not required to assist in discharge of de-feathered bird as the automatic switch gear for door is standardized.
- The chicken is assorted equally to the drum picker on left and right side by the automatic assorting device.
- With de-feather discharging system in place ,this machine can be used consecutively.
- This machine is highly hygienic as it is easy to wash.
- For durability and high corrosion resistance, all the major parts of this machine are made from stainless steel 304.

Technical Specification

Model No.	TMI-5
Power output	2.2kw × 2, 0.75kw, 0.4kw
V o l t a g e	200V
H e i g h t	1,600mm
L e n g t h	2,800mm
W i d t h	1,150mm
Enclosure F r a m e	Stainless steel 304
C a p a c i t y	24~30 birds
Processing time	60 seconds

Option

- De-feather rubber No,3(40° ) for replacement all except below
- De-feather rubber No,5(35° ) for replacement the third row from the second row of the central part
- De-feather rubber No,9(45° ) for replacement the part of side

\* The specialty and technical specification are subject to change, depending on change in scale of the plant corresponding to customer needs and installation without notice. Please inquire with us for further details.



Zoomed picture of burner

- This machine is able to burn left off feathers equally and efficiently as it is equipped with 8 burners on left, right and top bottom that are easily adjustable to various angles.
- A cover duct is installed to avoid the heating of the trolley.
- Stainless steel covers are on both sides to prevent from flame flicker and heat radiation.
- For durability and high corrosion resistance, all the major parts of this machine are made from stainless steel 304.

■ Option

- Burner for replacement

■ Technical Specification

Model No.	KB-2400
H e i g h t	1,800mm
L e n g t h	900mm
W i d t h	900mm
E n c l o s u r e F l a m e	Stainless steel 304
B u r n e r	8
C a p a c i t y	2,000~3,000 BPH

\* The specialty and technical specification are subject to change, depending on change in scale of the plant corresponding to customer needs and installation without notice. Please inquire with us for further details.

Patent Pending



Cooling Plate



Technical Specification

Model No.	CH-0709
Power output	3.7kw(4p) × 2 0.75kw(Gear Motor) × 1
Voltage	Three Phase 200V
Height	1,200mm
Length	10,650mm
Width	1,740mm
Weight	2.4t
Frame	Stainless steel 304
Conveyor	Stainless steel 304
Capacity	1,000~2,000 BPH

- An efficient cooling system that chills the birds “without ice” and causing any damage ,with a cold water circulation that is generated by the screw propeller.  
Approximate: birds temperature can be reduced to 10℃ or less in about 20 to 30 minutes at about 38 ℃, quickly cooling and maintaining freshness.  
\* Depending on size of the birds.
- The coolant is made directly through the stainless steel cooling plate with a thickness of 2.0, making the cooling water directly. Therefore the heat loss is as low as possible and the efficiency is high, it is high efficiency, durable and economical compared to conventional products.
- This machine is highly hygienic as it is easy to wash.
- Compared to other companies' chillers, with high efficiency and low price, the cooling system is almost the same cost as the type using ice.
- By the control by the timer, it is cooled at night, and at the beginning of work, it can be set to the optimum temperature.
- For durability and high corrosion resistance, all the major parts of this machine are able to made from all stainless steel 304 specially. The structure is simple, the cooling plate is also released, easy to lift the conveyor, easy to clean and hygienic.

\* The specialty and technical specification are subject to change, depending on change in scale of the plant corresponding to customer needs and installation without notice. Please inquire with us for further details.





- Line speed is easily adjustable as this machine is equipped with inverter to adjust the speed.
- It is possible to adjust the extending of line chain which happens due to long-term use.
- Range of shackles is available : 152mm(6inch), 228mm(9inch) or 304mm(12inch) .
- This machine structure refrains from backlash of shackles for catchers to hold down trolley strongly.
- The catchers have undergone heat treatment to ensure toughness.
- We recommend the customers to choose all stainless steel 304 make if the environment is extremely humid and hot.

■ Option

- Catcher for replacement

■ Technical Specification

Model No.	OH-2400
Power output	0.75~3.70kw × 1
V o l t a g e	200V
H e i g h t	850mm
L e n g t h	1100mm
W i d t h	700mm
S h a f t	Stainless steel 304
F r a m e	Stainless steel 304
c a t c h e r	Stainless steel 304
C a p a c i t y	1,000~4,000 BPH

\* The specialty and technical specification are subject to change, depending on change in scale of the plant corresponding to customer needs and installation without notice. Please inquire with us for further details.



- Line speed is easily adjustable as this machine is equipped with inverter to adjust speed.
- It is possible to adjust the extending of line chain which happens due to long-term use.
- Range of shackles is available : 152mm(6inch), 228mm(9inch) or 304mm(12inch).
- This machine structure refrains from backlash of shackles for catchers to hold down trolley strongly.
- The catchers have undergone heat treatment to ensure toughness.
- This machine is standardized birds bone remover for smooth processing in part of the cut-up area.
- We recommend the customers to choose all stainless steel 304 make if the environment is extremely humid and hot.

## Option

- Catcher for replacement

## Technical Specification

Model No.	OH-2401
Power output	0.75~3.70kw × 1
V o l t a g e	200V
H e i g h t	1,330mm
L e n g t h	1,250mm
W i d t h	800mm
S h a f t	Stainless steel 304
F r a m e	Stainless steel 304
c a t c h e r	Stainless steel 304
C a p a c i t y	1,000~4,000 BPH

\* The specialty and technical specification are subject to change, depending on change in scale of the plant corresponding to customer needs and installation without notice. Please inquire with us for further details.



HU-2401



HU-2402



HU-2403

- Easy to hang and remove birds.
- This machine is highly hygienic as it is easy to wash.
- For durability and high corrosion resistance, all the major parts of this machine are made from stainless steel 304.

■ Technical Specification

Model No.	HU-2401	HU-2402	HU-2403
Purpose	Live Bird Handling	Cut-up	Cut-up
Height	570mm	450mm	450mm
Width	130mm	130mm	130mm
Thickness	φ 7~8	φ 7~8	φ 7~8
Frame	Stainless steel 304	Stainless steel 304	Stainless steel 304

\* The specialty and technical specification are subject to change, depending on change in scale of the plant corresponding to customer needs and installation without notice. Please inquire with us for further details.



TR-2401



TR-2402



zoomed Adapter plate

- This trolley is made from aluminum to keep the frame lightweight.
- For highly durability and corrosion resistance, Rollers of this trolley are made from special resin to keep them lightweight.
- To complement durability, the adapter plates that also counters over-loading are made from stainless steel 304 to ensure toughness.

■ Technical Specification

Model No.	TR-2401	TR-2402
Purpose	Line pipe 1inch1/2	Line pipe 1inch1/4
Height	220mm	205mm
Width	120mm	110mm
Roller	Special resin	Special resin
Frame	Aluminum	Aluminum
Adapter plate	Stainless steel 304	Stainless steel 304

\* The specialty and technical specification are subject to change, depending on change in scale of the plant corresponding to customer needs and installation without notice. Please inquire with us for further details.



- This machine is ideal for cost saving as it does not need a labor to clean each shackle and trolley manually with high pressure cleaner.
- This machine uniformly washes up shackle and trolley by putting them in between two concealed rotary brushes while rinsing with water.
- The brush can be easily removed from the bottom, so you can easily exchange it.

■ Technical Specification

Model No.	HS-2400
Power output	0.75kw × 2
Voltage	200V
Height	1,364mm
Length	1,153mm
Width	774mm
Enclosure	Stainless steel 304
Frame	Stainless steel 304
Capacity	2,000~3,000 BPH

\* The specialty and technical specification are subject to change, depending on change in scale of the plant corresponding to customer needs and installation without notice. Please inquire with us for further details.





- This machine can cut off approximately 2,000 ~3,800 bird heads per hour.
- Easy to adjust the height (670~1,020mm)
- This machine is highly hygienic as it is easy to wash.
- For durability and high corrosion resistance, all the major parts of this machine are made from stainless steel 304.

Option

- Spare rotary blade
  - \* Available in three kinds of material; 304 stainless steel, alloy tool steel and high-speed tool steel.

Technical Specification

Model No.	HC-2400
Power output	0.4kw × 1
V o l t a g e	200V
H e i g h t	670~1,020mm
L e n g t h	865mm
W i d t h	500mm
Enclosure	Stainless steel 304
Rotary blade	Stainless steel 304, alloy tool steel and high-speed tool steel.
C a p a c i t y	2,000~3,800 BPH

\* The specialty and technical specification are subject to change, depending on change in scale of the plant corresponding to customer needs and installation without notice. Please inquire with us for further details.



Container H1700mm × L1020mm × W520mm

Technical Specification

Model No.	SE-2400
Power output	0.75kw × 2, 7.5kw × 2 0.4kw × 1
Voltage	200V
Height	2,820mm
Length	3,206mm
Width	1,400mm
Enclosure	Stainless steel 304
Rotary blade	Stainless steel 304
Capacity	90~100 containers / h

\* The specialty and technical specification are subject to change, depending on change in scale of the plant corresponding to customer needs and installation without notice. Please inquire with us for further details.

- This machine takes 35~40 seconds per container to wash, it is highly effective and cost saving when compared to manual cleaning by a labor. Furthermore it is possible to change the speed of automatic container conveyor according to customer needs.
- Automatic container conveyor installed at the bottom of this machine makes it possible to move out the containers automatically.
- This machine can wash up containers uniformly with high-pressure cleaner top-bottom and sideways ,re-using rinse water.
- High-pressure water is injected at a rate of 2.0 t / min from 40 nozzles from the top and bottom, right side, so it is possible to clean finish without irregularity. As a pressure, please imagine a strong water pressure that can not suppress the nozzle by hand. After going through the washing booth, go through the high temperature disinfection booth, similarly spray hot water at a rate of 2.0 t per min from 40 nozzles and heat disinfect. The temperature of the internal rack after leaving the washing machine is about 76 °C, and it is effective for countermeasures against Red mite by thermal disinfection.
- Rinse water is filtered with rotary filter and re-used.
- For durability and high corrosion resistance, all the major parts of this machine are made from stainless steel 304.



### ■ Technical Specification

<b>Model No.</b>	<b>ACW-3000</b>
<b>Power output</b>	<b>7.5 kw × 1    0.4kw × 1</b>
<b>V o l t a g e</b>	<b>200V</b>
<b>H e i g h t</b>	<b>1,620mm</b>
<b>L e n g t h</b>	<b>3,570mm</b>
<b>W i d t h</b>	<b>2,531mm</b>
<b>Water tank</b>	<b>800ℓ</b>
<b>Enclosure</b>	<b>Stainless steel 304</b>
<b>F r a m e</b>	<b>Stainless steel 304</b>
<b>C a p a c i t y</b>	<b>500 containers / h</b>

\* The specialty and technical specification are subject to change, depending on change in scale of the plant corresponding to customer needs and installation without notice. Please inquire with us for further details.

- This machine takes 10 seconds per container to wash, it is highly effective and cost saving when compared to manual cleaning by a labor. Furthermore it is possible to change the speed of automatic container conveyor according to customer needs.
- Automatic container conveyor installed at the bottom of this machine makes it possible to move out the containers automatically.
- High pressure water is uniformly jetted from the top and bottom and left and right with washing water of about 0.8 t per min from 20 washing nozzles, uneven cleaning finish is possible. Using circulating water. Also, in the rinsing process, finish with 4 nozzles.
- Easy to clean and maintain hygiene as it is equipped with high pressure cleaner nozzle.
- For durability and high corrosion resistance, all the major parts of enclosure are made from stainless steel 304.
- Rotary filter (foreign substance separating machine) and circulating pump are also attached.



**Backside of filter**



**Inside of filter**

- Rinse water once used is filtered for foreign substances(ex. feather) with rotary filter continuously .
- Foreign substances(ex. feather) are discharged into container as waste in front of rotary filter.

**Technical Specification**

Model No.	LS-2401	LS-2402
Power output	0.4kw(0.4P) × 1	0.75kw(6P) × 1
V o l t a g e	200V	200V
H e i g h t	1,250mm	1,400mm
L e n g t h	1,250mm	2,000mm
W i d t h	620mm	900mm
Diameter of drum	φ 400	φ 620
Length of drum	1,200mm	2,000mm
E n c l o s u r e	Stainless steel 304	Stainless steel 304
F r a m e	Stainless steel 304	Stainless steel 304
T a n k	Stainless steel 304	Stainless steel 304
C a p a c i t y	Less than 1.2t /h	More than 1.2t/h

\* The specialty and technical specification are subject to change, depending on change in scale of the plant corresponding to customer needs and installation without notice. Please inquire with us for further details.





Foot remover and conveyor for storing foot are option



Top view of foot skin remover

- Labor can be reduced as the process is fully automatic, it starts after certain quantity of bird feet are collected on the conveyor belt. After being processed in foot skin remover, feet are discharged automatically.
- This machine is highly hygienic as it is easy to wash.
- For durability and high corrosion resistance, all the major parts of this machine are made from stainless steel 304.
- This machine can also be used as Gizzard Fat Remover.

Option

- Conveyor for storing foot
- Foot remover
- De-feather rubber Maru(s) for replacement
- De-feather rubber No.3(55° ) for replacement
- De-feather rubber No.4(50° ) for replacement

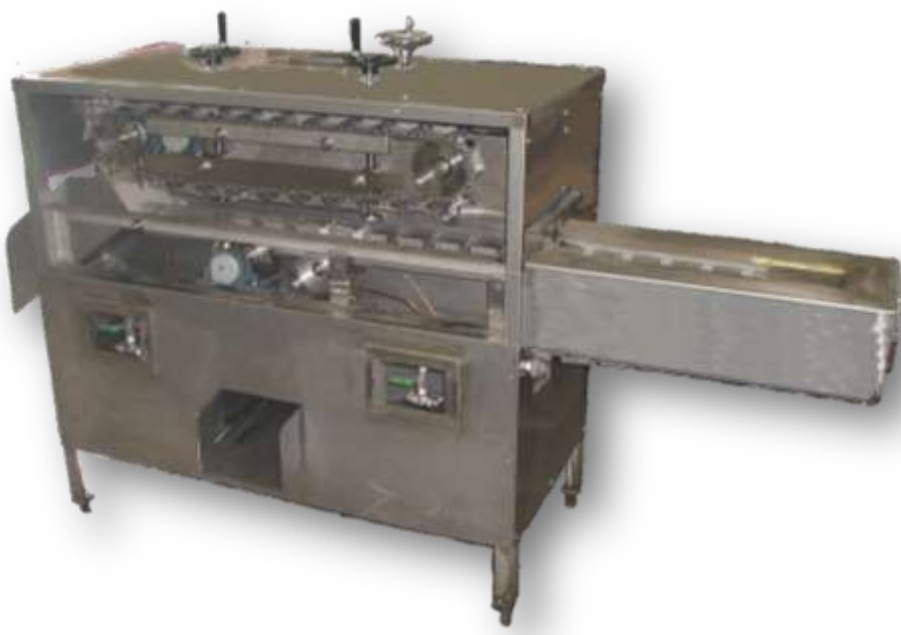
\* Three kinds of De-feather rubber mentioned above are available and one can chose depending on the process.

Technical Specification

Model No.	MK-2400
Power output	1.5kw × 1
V o l t a g e	200V
H e i g h t	1,100mm
L e n g t h	840mm
W i d t h	840mm
E n c l o s u r e F l a m e	Stainless steel 304
C a p a c i t y	25kg
Processing time	360 seconds

\* The specialty and technical specification are subject to change, depending on change in scale of the plant corresponding to customer needs and installation without notice. Please inquire with us for further details.





\* The photo shows the machine without front cover to display the inner view.



Rotary blade



Zoomed photo of “drive”

- This machine has a capacity to process 3,500~4,000 gizzards per hour.
- Cutting depth or timing to hold gizzards can be easily adjusted.
- For durability and high corrosion resistance, all the major parts of this machine are made from stainless steel 304.

Option

- Spare rotary blade
- \* We have two kinds of material, alloy tool steel and high-speed tool steel.

Technical Specification

Model No.	SG-2400
Power output	0.40kw × 1 0.55kw × 1 (Gear Motor)
Voltage	200V
Height	1,200mm
Length	1,840mm
Width	570mm
Enclosure Frame	Stainless steel 304
Rotary blade	Alloy tool steel and high-speed tool steel.
Capacity	3,500~4,000 gizzards/h

\* The specialty and technical specification are subject to change, depending on change in scale of the plant corresponding to customer needs and installation without notice. Please inquire with us for further details.



Hopper and Shutter



Hatch

- The size of the carrier is up to a max of 80mm, and is actually used to transport the liquid or solid waste, entrails and bones, etc.
- Tank has an openable hatch for easy washing and maintenance.
- This machine has a double shutter to prevent from scattering of the contents when discharged.
- The plumbing (Vinyl chloride) to be connected with the vacuum transport system can support the suction up to a max of 50m on the surface and 12m height.
- This machine is equipped with automatic discharge servomechanism to control over flow.

■ Technical Specification

Model No.	SH-2400
Power output	11kw × 1 (For blower)
V o l t a g e	200V
H e i g h t	1,700mm
L e n g t h	1,700mm
W i d t h	1,150mm
H o p p e r s h u t t e r	Stainless steel 304
T a n k	Stainless steel 304
C a p a c i t y	150~300kg/h

\* The specialty and technical specification are subject to change, depending on change in scale of the plant corresponding to customer needs and installation without notice. Please inquire with us for further details.



- Easy removal and cleaning of rotary blade makes it highly hygienic.
- This machine has a guide pole for steady cutting.
- It is possible to cut the bird meat without crushing the bones.
- For durability and high corrosion resistance, all the major parts of this machine are made from stainless steel 304.

Option

- Safety gloves
- Spare rotary blade
- \* Three kinds of material are available, stainless steel 304, alloy tool steel and high-speed tool steel.

Technical Specification

Model No.	BC-2400
Power output	0.75kw × 1
Voltage	200V
Height	480mm
Length	400mm
Width	420mm
Enclosure Flame	Stainless steel 304
Rotary blade	Stainless steel 304, Alloy tool steel and high-speed tool steel.

\* The specialty and technical specification are subject to change, depending on change in scale of the plant corresponding to customer needs and installation without notice. Please inquire with us for further details.



Drive with inverter

- \* The machine is shown without waterproof cover to display inner view.
- \* The machine displayed is with rubber belt.



Plastic Belt

- It is good for carrying small items.
- No slip and lateral displacement is there as direct sprocket drive.



Wire Belt

- Easy to wash makes highly hygienic.
- No slip and lateral displacement is there as direct sprocket drive.



Mesh Belt with chain

- Easy to wash makes it highly hygienic.
- No slip and lateral displacement is there as direct sprocket drive.
- Good to carry heavier material than the wire belt.

- Easy to wash, the appliance is water resistant and highly hygienic. However direct use of high pressure water to the drive and electricity connection can cause permanent damage to it.
- This machine is attached with work tables on both sides.
- We handle conveyor belt ranging from food use to processing use. Technical specifications are changed according to costumer’s need. For example, it is possible to choose the belts from rubber belt, plastic belt, wire belt, mesh belt with chain mentioned above according to the necessity of process.
- Conveyor can be changed to a model with inverter that can adjust speed.
- For durability and high corrosion resistance, all the major parts of this machine are made from stainless steel 304.

Technical Specification

Model No.	CV-2400
Power output	0.4kw × 1
V o l t a g e	200V
H e i g h t	850mm
L e n g t h	4,500mm
W i d t h	350mm
Table of width	300mm × 2
F r a m e	Stainless steel 304
S h a f t	Stainless steel 304

\* The specialty and technical specification are subject to change, depending on change in scale of the plant corresponding to customer needs and installation without notice. Please inquire with us for further details.

Option

- Belt for replacement





### Mesh Belt with chain

- Easy to wash makes it highly hygienic.
- No slip and lateral displacement is there as direct sprocket drive.
- Good to carry heavier material than the wire belt.



### Antibacterial cutting board

Easy to sterilize and highly hygienic as it is antibacterial and heat resistance.



### Mini conveyor

To increase the efficiency of work, this machine can be attached with mini conveyor on both sides under the cutting boards.

- Mesh belt is easy to clean and highly hygienic as it can be cleaned from all sides.
- It is possible to attach antibacterial cutting board on both sides.(cutting board is removable and it is possible to sterilize it.)
- Mini conveyors can be attached on both the sides of this machine, that can carry the waste automatically to the discard area, increasing to work efficiency.
- Conveyor can be changed to a model with inverter that can adjust speed.
- For durability and high corrosion resistance, all the major parts of this machine are made from stainless steel 304.

## Technical Specification

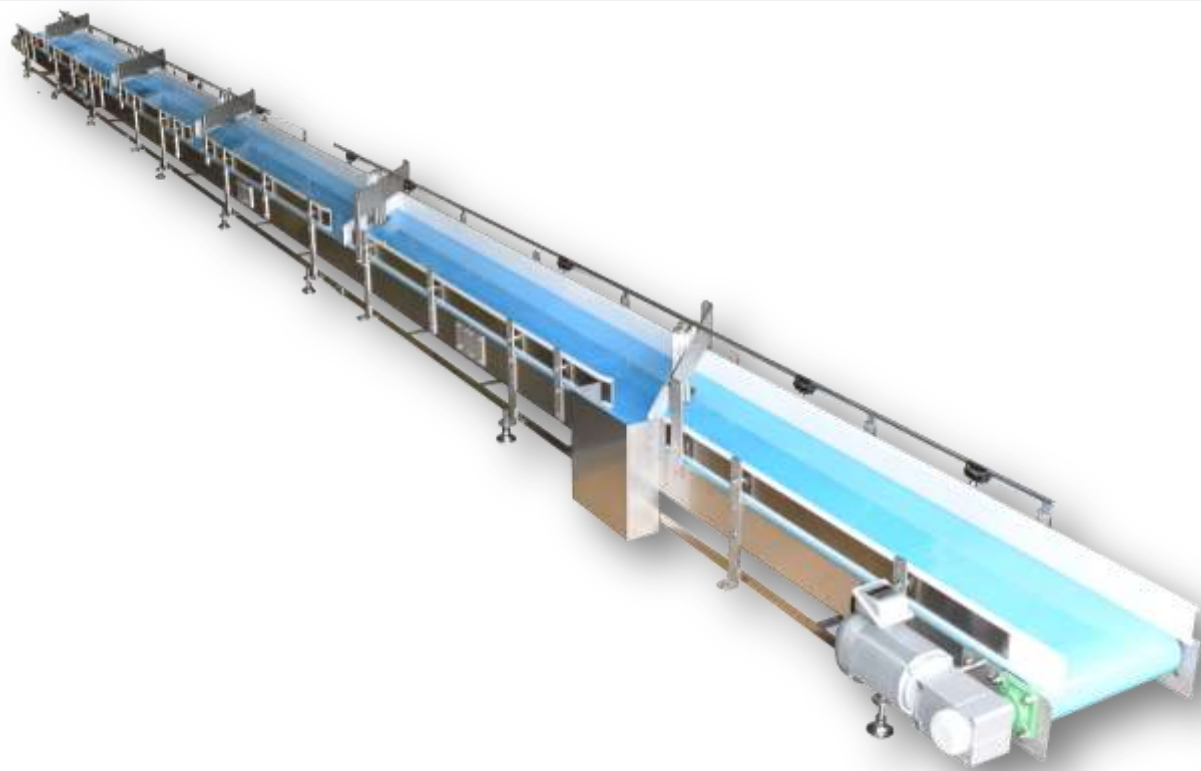
Model No.	CV-2401
Power output	0.75kw × 1
V o l t a g e	200V
H e i g h t	810mm
L e n g t h	9,700mm
W i d t h	630mm
Table of width	343mm × 2
F r a m e	Stainless steel 304
S h a f t	Stainless steel 304

\* The specialty and technical specification are subject to change, depending on change in scale of the plant corresponding to customer needs and installation without notice. Please inquire with us for further details.

## Option

- Mesh Belt with chain for replacement
- Antibacterial cutting board
- Mini conveyor





It uses a single material food belt and does not absorb moisture or oil because it is a single resin without using fibers. It is easy to dry, it suppresses breeding of bacteria and is sanitary. It can also be changed to inverter mounted type which can adjust speed. Since we are using stainless steel stainless steel 304 as standard specification, it is excellent in corrosion resistance and durability. (We can also manufacture other materials such as stainless steel 316 which is more corrosion-resistant, so please consult us.) Our products are sometimes used in high humidity and some underwater environments, even in poor environment for a long time It is strong enough to be able to receive, and it has semi-permanent durability (excluding expendables requiring regular replacement such as belts and bearings). It is made from stainless steel plate which is thicker than the commercial conveyor and is made of stainless steel made by sticking to every single bolt. In addition, a waterproof motor is standard equipment. (In addition, downgrade to indoor type motor is also possible, so please consult us environment etc.)

### Technical Specification

Model No.	CV-2402
Power output	0.75kw × 1
V o l t a g e	Three phase 200V
H e i g h t	140mm
L e n g t h	11,250mm
W i d t h	680mm belt400
W e i g h t	357.5kg
F r a m e	Stainless steel 304

\* The specialty and technical specification are subject to change, depending on change in scale of the plant corresponding to customer needs and installation without notice. Please inquire with us for further details.



It uses a stainless steel balance weave belt, it is excellent in strength and durability, and is hygienic. There is also no worry of slipping and meandering. It can also be changed to inverter mounted type which can adjust speed.

Because we are using stainless steel 304 as the standard specification, it is excellent in corrosion resistance and durability. (We can also produce other materials such as corrosion-resistant stainless steel 316. Please contact us for further information.) Our products are sometimes used under high humidity and some underwater environments, even in poor environment forever. It is strong enough to be used and has semi-permanent durability (excluding expendables requiring regular replacement such as belt and bearing). It is made of stainless steel plate which is thicker than commercial conveyor (main frame of this product is 3 mm), made of all stainless steel stuck to one bolt. In addition, a waterproof motor is standard equipment. (You can also downgrade to an indoor type motor, so please consult us about the environment etc.) This product is also an example of a custom made conveyor. We will manufacture optimum conveyor for customer's usage environment.

### Technical Specification

<b>Model No.</b>	<b>CV-2403</b>
<b>Power output</b>	<b>0.75kw × 1</b>
<b>V o l t a g e</b>	<b>Three phase 200V</b>
<b>H e i g h t</b>	<b>1,750mm</b>
<b>L e n g t h</b>	<b>2,400mm</b>
<b>W i d t h</b>	<b>600mm belt 350mm</b>
<b>W e i g h t</b>	<b>134.5kg</b>
<b>F r a m e</b>	<b>Stainless steel 304</b>

\* The specialty and technical specification are subject to change, depending on change in scale of the plant corresponding to customer needs and installation without notice. Please inquire with us for further details.



It uses a belt conveyor in the form of assembling a plastic module and has high belt strength and excellent durability, so it demonstrates high performance in a wide range of industrial production lines. There is also no worry of slipping and meandering.

This is an example of installation in which it is connected to a ceiling hanging type conveyor exceeding 10 m from the inclined conveyor and carried.

It can also be changed to inverter mounted type which can adjust speed.

Because we are using stainless steel 304 as the standard specification, it is excellent in corrosion resistance and durability. (We can also produce other materials such as corrosion-resistant stainless steel 316. Please contact us for further information.) Our products are sometimes used under high humidity and some underwater environments, even in poor environment forever It is strong enough to be used and has semi-permanent durability (excluding expendables requiring regular replacement such as belt and bearing). It is made from stainless steel plate which is thicker than the commercial conveyor and is made of all stainless steel sticking to a single bolt. In addition, a waterproof motor is standard equipment. (In addition, downgrade to indoor type motor is also possible, so please consult us environment etc.)

This product is also an example of a custom-made conveyor. We will manufacture optimum conveyor for customer's usage environment.

■ Technical Specification

Model No.	CV-2404
Power output	0.75kw × 1
V o l t a g e	Three phase 200V
H e i g h t	3,500mm
L e n g t h	Horizontal 1,500mm Inclination 3,300mm
W i d t h	600mm belt350mm
F r a m e	Stainless steel 304

\* The specialty and technical specification are subject to change, depending on change in scale of the plant corresponding to customer needs and installation without notice. Please inquire with us for further details.



The lid with safety device

- This machine takes 2~3 minutes to dry 155ℓ raw material at a time.
- This machine is very safe to use as it does not works until the safety device confirms the properly closed lid.
- This machine is good for drying food, especially vegetable etc.
- For durability and high corrosion resistance, all the major parts of this machine are made from stainless steel 304.

■ Technical Specification

Model No.	FD-2400
Power output	1.5kw × 1
V o l t a g e	200V
H e i g h t	1,700mm
L e n g t h	1,700mm
W i d t h	1,150mm
Capacity of drum	155ℓ
E n c l o s u r e F r a m e	Stainless steel 304
C a p a c i t y	155ℓ/once
Processing time	2~3minute

\* The specialty and technical specification are subject to change, depending on change in scale of the plant corresponding to customer needs and installation without notice. Please inquire with us for further details.



## Other products



### Stainless steel pot

Welding technology for joining metals is important for welding strength, but the beauty of beads (weld seams) is also important.

This product will be an object that makes full use of the beauty of the bead and stainless steel material. We do not dare take the welding burn, leaving a texture that changed to iridescent iridescence caused by heat.

Stainless steel material is hard to rust, unlike pottery, because it has high strength, it is recommended for entrance objects etc.

If you would like to make it with such an image etc, please contact us first. Along with customers' requests and images, we receive consistently from design to production. We will shape your image such as monuments, metal art, signs, signs, showcases, eaves, architectural hardware, furniture fixtures, steel objects and order sinks.

(Dimension H 400 ×  $\phi$  500)



### Stainless steel tank

It is used in meat processing factory. Because the food is touched directly, the inside of the stainless steel tank is welded and it is structured to prevent germ accumulation without gaps.

Moreover, it is made of all stainless steel using SUS 304 until reaching the valve, so it is rust resistant and hygienic.

(Dimension L 900 × W 900 × H 670)



### Stainless steel dolly

It is used in the product packaging area in the soap factory. We finished with all stainless steel from dolly to casters.

It is lightweight and durable, and it is possible to stack trucks so as not to take up space.

(Dimension L 750 × W 510 × H 150)

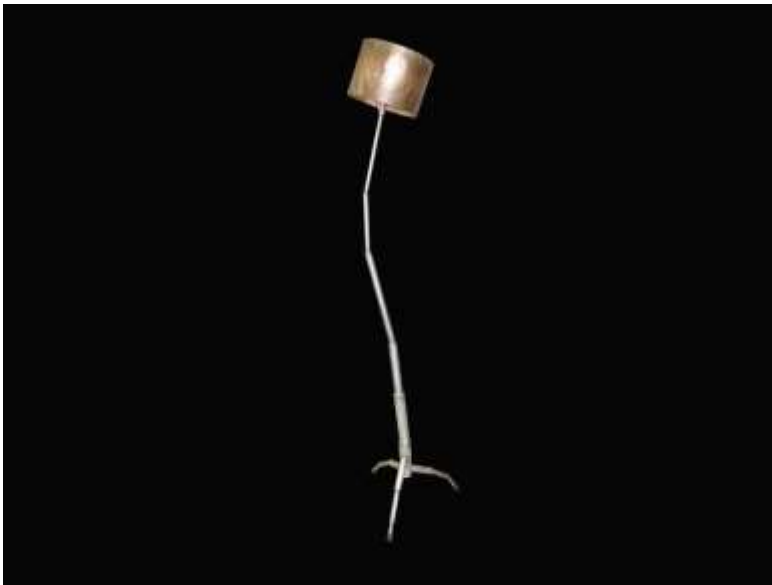




### **Stainless steel stand**

It is a flower stand made with stainless steel. Despite the use of metal, I made four feet with the image that the tree grew naturally, took in the suppleness and made it in harmony with the natural things such as flowers and trees. Hands Awards The 16th prize-winning product.

(Dimension H770 × L550 × W500 Upper shelf L400 × W400 Lower shelf L390 × W370 Weight 9.8 kg)



### **Stainless steel lamp**

It is a stand light made with stainless steel. Despite the use of metal, I made it with an image that the tree grew naturally and made it a warm design. Hands Awards The 16th prize-winning product.

(Dimension H 1,760 × L 400 × W 400 weight 5.3 kg)



### **Stainless steel pot**

It becomes an object for the entrance. This is a work finished with a rugged taste rather than precision. We scooped stainless steel boards so that scaly shaped products were manually bent with a stainless steel plate with a hammer and semi-automatic welding was used to make pottery by the potter.

We did not polish this, leaving a black welding burn of semi-automatic welding, finishing to highlight the glow of stainless steel.

(Dimension  $\phi$  500 × H 750)



Suzume

Maru(S)

No,1(with metal)NBR

Technical Specification

Model No.	Suzume	Maru(S)	No,1(with metal)NBR
Purpose	Drum Picker for runner back	Foot skin remover (Gizzard Fat Remover)	Caterpillar conveyor
Length	45mm	35mm	89mm
Mounting hole diameter	φ 13	φ 20	φ 30
Material	NR	NR	NBR
Unit price	¥230-	¥260-	¥580-
Price (1 box)	¥69,000- 300 × 1case Total 300	¥26,000- 100 × 1case Total 100	¥174,000- 50 × 6case Total 300



No,3(40° )

No,3(55° )

No,4(35° )

Technical Specification

Model No.	No,3(40° )	No,3(55° )	No,4(35° )
Purpose	MI-2～MI-6	Foot skin remover (Gizzard Fat Remover)	Foot skin remover (Gizzard Fat Remover)
Length	88mm	88mm	75mm
Mounting hole diameter	φ 30	φ 30	φ 24
Material	NR (soft)	NR (hard)	NR (soft)
Unit price	¥320-	¥320-	¥270-
Price (1 box)	¥76,800- 40 × 6case Total 240	¥76,800- 40 × 6case Total 240	¥81,000- 50 × 6case Total 300

\* Price as on January 1, 2013

\* Price indicated above are for reference purpose only. Kindly confirm the prices before placing an order.

De-feather rubber

No,5(35° ) No,8(with cloth) No,9(60° ) NO,9(45° ) NO,10(50° ) NO,11(round)



No,5(35° )

No,8(with cloth)

NO,9(60° )

■ Technical Specification

Model No.	No,5(35° )	No,8(with cloth)	NO,9(60° )
Purpose	MI-1 , MI-4~MI-6 (central side 2~3line)	Primary /Finish Use Picker	Torque Picker
Length	83mm	288mm	83mm
Mounting hole diameter	φ 24	φ 30	φ 20
Material	NR	NR	NR (hard)
Unit price	¥290-	¥570-	¥130-
Price ( 1 box )	¥87,000- 50 × 6case Total 300	¥57,000- 100 × 1case Total 100	¥52,000- 400 × 1case Total 400



NO,9(45° )

NO,10(50° )

NO,11(round shape)

■ Technical Specification

Model No.	NO,9(45° )	NO,10(50° )	NO,11(round shape)
Purpose	MI-5,MI-6 side	Picker for other company	Picker for other company
Length	83mm	83mm	98mm
Mounting hole diameter	φ 20	φ 15	φ 20
Material	NR (soft)	NR	NR
Unit price	¥160-	¥275-	¥310-
Price ( 1 box )	¥64,000- 400 × 1case Total 400	¥13,750- 50 × 1case Total 50	¥93,000- 50 × 6case Total 300

\* Price as on January 1, 2013

\* Price indicated above are for reference purpose only. Kindly confirm the prices before placing an order.

## Other Items and Accessories that we handle

### ■ Motor , Gear motor , Blowers

---

Hitachi Industrial Equipment Systems Co.,Ltd. , Sumitomo Heavy Industries, Ltd.  
Tsubakimoto Chain Co. , Mitsubishi Electric Corporation etc.

### ■ Pumps

---

EBARA CORPORATION , Hitachi Industrial Equipment Systems Co.,Ltd. etc.

### ■ Bearing

---

NSK Ltd. , NTN Corporation , NIPPON PILLOW BLOCK CO., LTD. etc.

### ■ Conveyor belts

---

Mitsuboshi Belting Ltd. Universal Industrial Co., Ltd.  
Forbo Siegling Japan Ltd. , etc.

### ■ Refrigerators and Freezers

---

HOSHIZAKI ELECTRIC Co.,LTD. , Panasonic Corporation (SANYO Electric Co.,Ltd. ) , etc.

### ■ Plumbing materials , Faucet materials

---

TOTO LTD. , LIXIL Corporation , SAN-EI Faucet Mfg Co.,Ltd. KITZ Corporation , etc.

### ■ Cutting board , Detergent , Hand sanitizer , Occupational Health & Environmental Safety products

---

Sumitomo 3M Limited , etc.

### ■ Dolly , Chutes , Tray , Table and Shelves etc.

---

\* In addition to the above, we also handle other range of products. For details, please inquire with us.

# Please be sure to read

- The technical specifications and other details written in this catalogue are as on January, 2013 and are subject to change without notice.
- The technical specifications ,price and other details written in this catalogue are subject to change, depending on the change in the scale of processing plant corresponding to customer needs and installation , etc. For more details, please inquire with us.
- Any price if mentioned in the catalogue does not include any type of freight fee, packing costs, installation costs and consumption tax , etc.
- Note that delivery time is subject to change according to each products. For details, please inquire with us.
- We pay careful attention to our manufacturing process, for any issues, please contact our representative.
- We might not be able to support changes after the confirmation and placement of orders.
- Do not use direct high pressure water on the drive and electricity connections even if machine's capacity shows water resistant or water proof, as it can cause permanent damage to it.





**Ishii Manufacturing**

**●Head office**

3-3-1 Morishita, Koto-ku, Tokyo, 135-0004, JAPAN

[http: //ishii-mfg.co.jp](http://ishii-mfg.co.jp)

Email: [info@ishii-mfg.co.jp](mailto:info@ishii-mfg.co.jp)

Tel : +81-3-3633-5651

Fax: +81-3-3633-5654

**●Warehouse**

2-923 Makuharicho, Hanamigawa-ku, Chiba-shi, Chiba,  
262-0032, JAPAN